

Sunday, August 30th 1981

KICK-OFF 3.30 p.m.



versus

KEIGHLEY



Slalom Lager
RUGBY LEAGUE
SECOND DIVISION
CHAMPIONSHIP

Official Programme 25p.

**FOR
LUMBERING
EATING AND
LIDING MATERIALS
THROUGHOUT
THE NORTH...**

**Graham-Gratrix
have it
covered!**



M GROUP

...rwick, Birkenhead, Birmingham, Blackpool, Bolton,
... Bradford, Caernarvon, Carlisle, Chester,
... Driffield, Halifax, Huddersfield, Hull, Leeds,
... Manchester, Morecambe, Newcastle, Nottingham

Huddersfield Rugby League Football Club

incorporated in the Huddersfield Cricket & Athletic Club Ltd

Founded 1874

The Pavilion, Fartown, Huddersfield HD2 2SD

Directors:

ROY BROOK (Chairman)
EDWARD O. SELBY (Vice Chairman)
MEL BEDFORD (Football)
COLIN WOOD

Secretary:

SANDRA LEONARD

Commercial Manager:

ROY LIGHT

Coach:

LES SHEARD

Assistant Coach:

EDDIE BARTON

Club Doctor:

DAVID DURIE, BA, MB.Ch.B., DPM.

Physiotherapist:

PAUL LEARY, MCSP

Assistant Physiotherapist:

GORDON GRAY-COWAN

Executive Committee:

D. HOLROYD, J.T. KAYE, Mrs. S. KAYE,
T. MATTHEWMAN (Yorks. County Rep.)
K. MOSLEY, C. NORCLIFFE, B.R. WILSON

Timekeeper:

K. MOSLEY

Groundsman:

A. CORNELL

Kitman:

B. COOPER

Programme Editor:

NICK SELBY

Caterers to the Club:

VILLA CATERERS, KIRKBURTON

Telephones:

Pavilion Office 30710
Bowling Club 21884
Commercial Office 31726



FARTOWN HONOURS

R.L. Championship

Winners: — 1911-12, 1912-13, 1914-15, 1928-29,
1929-30, 1948-49, 1961-62.

Runners-up: — 1913-14, 1919-20, 1922-23, 1931-32,
1945-46, 1949-50.

R.L. Challenge Cup

Winners: — 1913, 1915, 1920, 1933, 1945, 1953.

Runners-up: — 1935, 1962

Yorkshire League Championship

Winners: — 1911-12, 1912-13, 1913-14, 1914-15,
1919-20, 1921-22, 1928-29, 1929-30, 1948-49, 1949-50,
1951-52

Yorkshire County Challenge Cup

WELCOME

TO

KEIGHLEY

We open our new campaign for Slalom League honours today with a visit from our good friends from Lawkholme Lane. At the time of writing this article they are preparing to meet Batley in the second round of the Yorkshire Cup, after a very creditable victory over Bramley in the first round.

Last season we managed to do the treble but the final match in that series was certainly a close run thing, when we managed victory by 26-23. So all the pointers are set today for a good game, and with this in mind we bid a warm Fartown welcome to all Officials, Players and Supporters from Keighley.

Another greeting is for today's match officials — Mr. Ron Moore from Wakefield who is referee and Mr. Kent and Mr. Hall are touch judges —

HAVE AN ENJOYABLE GAME

Today's Music & Marching Display

is provided by the

Ker Roods Hotel

MELTHAM



Accommodation

Te & Table d'hote Restaurant

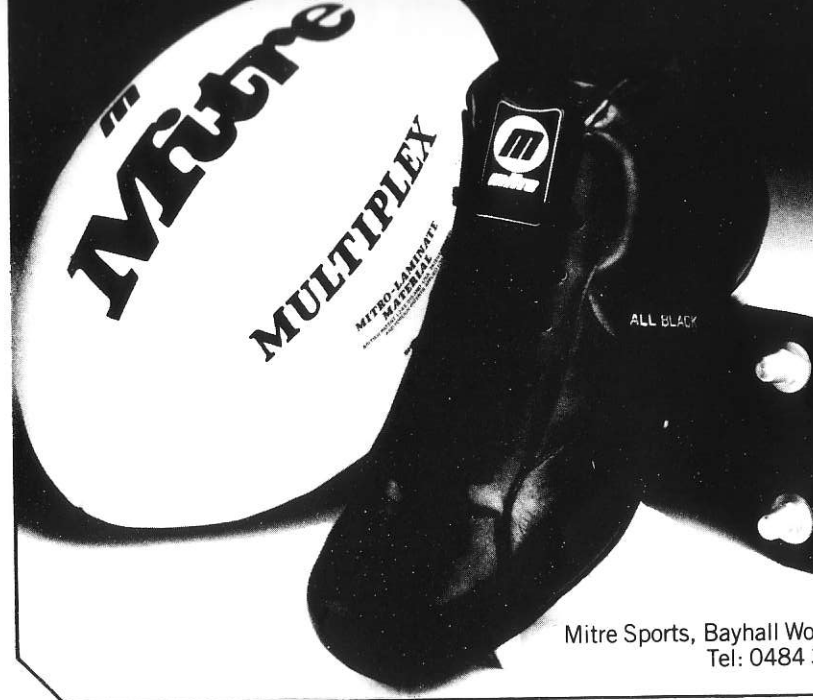
Conference Facilities

Wedding Receptions

Public & Private Bars

Bar Snacks

PHONE: HUDDERSFIELD 85 14 13



**Gives you
an unfair
advantage**

Mitre Sports, Bayhall Works, Birkby, Huddersfield, Yorks. UK.
Tel: 0484 37488. Telex: 517470

WELCOME FROM THE CHAIRMAN

ON behalf of the Directors, Players and Officials, I would like to welcome you to Fartown at the start of the new season

As many of you will be aware, the Club has gone through a somewhat turbulent time during the close season with the shock departure of Maurice Bamford. However, the Board has pursued its aim of finding new coaches worthy of the name of Huddersfield Rugby League Club and we believe we have the right men in Les Sheard and Eddie Barton.

We hope their appointments will mark the beginning of a return to better days, both

on and off the field. We also believe that the restructuring of the staff behind the scenes is a step in the same direction and with these close-season moves a much more sound approach is the aim.

Finally, may I thank you for your support in the past, and trust that you will continue to give it in the future.

Roy Brook

*Chairman
H.C. & A.C. Ltd.*

WELLINGTON MILLS

JOINERY CO.

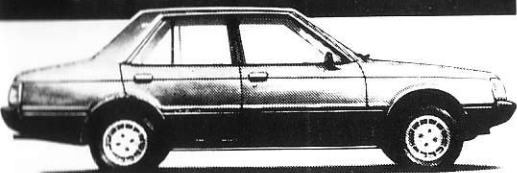
All Types of Joinery Work Carried Out
COMPLETE SERVICE TO THE SMALL BUSINESS
Installations — Timber — Shop Fronts — Counters

WELLS

Huddersfield (0484) 657551



IT'S HERE!
The Colt Lancer
-a new car for
a new decade.



MERCEDES-BENZ
KEEP LIMITED.

WELLS, HUDDERSFIELD

Phone 32144

TEE & EMMI SNACKS

MOBILE HOT DOG AND HAMBURGER VAN FOR YOUR
MATCH-DAY SNACKS AT FARTOWN

K. Myers, 21 Woodhouse Hill, Fartown, Huddersfield
Telephone: Huddersfield 36877

AT the risk of dating myself, some of my earliest recollections relating to Rugby League involved that fine Fartown side of the early 1950's. I can recall being a small impressionable boy on the Belle Vue terraces witnessing the flair and skill of a back division which included Johnny Hunter, Pat Devery, Lionel Cooper, Russ Pepperell, Peter Henderson and Billy Banks. Early memories and experiences linger on and consequently Fartown has always for me, represented a special brand of rugby, reminding me of those halcyon days and assuming importance for its even greater traditions and past achievements in the times of Wagstaff, Rosenfeld and company.

Needless to say, the wheel of fortune has turned full circle and success is now long overdue. We cannot forget former glories and it is my dear ambition in assuming the mantle of responsibility at Fartown to resurrect past pinnacles of achievement. It will take time but I am determined to build a side that can play with style and panache. As an advocate of open, fluid, expansive rugby, I aim to encourage individual flair and initiative within the side.

In recent years, many coaches have encouraged a plodding, mechanistic approach, overburdened by ritualistic set moves and patterns of play. As a result, the code has

become bereft of players with vision and the ability to read a game as it unfolds. The stereotyping of play has inhibited the development of the game in its classical context. I simply fail to understand why the game has adopted an attritional approach. Rugby is an evasive game and there needs to be a re-emphasis upon the creation and awareness of space.

Such a philosophy is not unrealistic — it is positive and attainable. Last season at unconsidered and unfashionable York I skippered a side that achieved success in style, scoring a total of 649 points, by far the highest total in either division. Not only did the pace and enterprise of the side enrapture large crowds but it put enjoyment back into the game for a good many players who had doubted their own potential.

I will be seeking similar verve and inspiration from my new side this season and believe that step by step this club can be restored to its ascendant positions of the past. Obviously changes in personnel will need to be made, but this will be done carefully and thoughtfully with the finances available in pursuit of players with both ability and perhaps, more importantly, the right mental approach.

Les Sheard

ropa



H EXCURSIONS TO ALL AWAY MATCHES

R SPECIALITY
WITH FIRST CLASS

ESTINATION,
TI

E YOUR FRIENDS
OLIDAY OR MINI

OF THE HOTELS

OCAL HOLIDAY
RVICE

Phone our expert staff at

HANSON EUROPA
PROVIDENCE GARAGE
LUCK LANE, HUDDERSFIELD
Phone 44426

HANSON EUROPA
BUS STATION, HUDDERSFIELD
Phone 24682

STRIP

TOWN TEAM

ED BY

LEADING MANUFACTURER



International Limited

Box 5, Umbro House, Wilmslow, Cheshire

S. MAUDE & CO. LTD.

PLUMBERS, ELECTRICAL, HEATING ENGINEERS
and GENERAL PROPERTY REPAIRS

98 ST. JOHN'S ROAD, BIRKBY, HUDDERSFIELD



WITH the new Rugby League season now just around the corner, we wish to present details of our extensive Rugby League programmes that we plan for the new season.

Starting from Sunday, 6th September, 1981, (and every Sunday)

11.30 a.m. to 12.00 noon. **R.L. TEAMTALK:** A look ahead to the big games with interviews, and the latest Rugby League talking points.

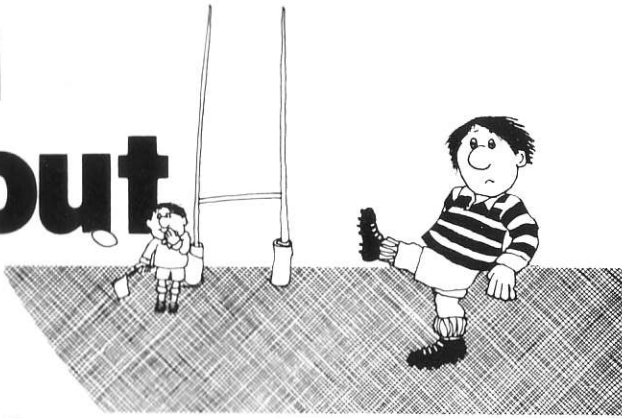
Introduced by Jack Wainwright.

2.45 p.m. to 5.15 p.m., **RUGBY LEAGUE NORTH:** The most comprehensive coverage of Rugby League in the country. Non stop commentary action from the top games up and down the country.

6.05 p.m. to 6.30 p.m., **R.L. ROUND UP:** Your chance to hear why your team won or lost.

Throughout the week all the latest R.L. news in our sports spot at 7.30 a.m. and 8.30 a.m. every day, plus midweek sport when it happens. The R.L. commentary team features, Jack Wainwright, Harry Gratton, Arthur Keegan, Alan Pearman and Tim Heley, Ray Hudson and Steve Coverdale. We broadcast on 388 metres medium wave and 92.4 VHF.

miss so
ch
hout
miner



Crockery

NE CHINA

T CRYSTAL
d Foreign

AND ORNAMENTS

it all occasions
ble prices



also at
**17a BREAD STREET
WAKEFIELD**
Telephone 72448

L ARCADE
LD

WOODHEAD SPORTS
9, Broad Lane, Moldgreen

Telephone: Huddersfield 39026

APPEARANCES & SCORERS 1st TEAM 1981/82

	Position	Opponent Hull K.R.	
BARTON, E.	1		
CRAMP, P.	2		
LEATHLEY, T.	^C 3		
SHEARD, L.	4		
GEORGE, W.	5		
SLATER, I.	6	Try-1	
SHEPHERD, M.	7		
JOHNSON, J.	8		
WROE, D.	9		
WALKER, A.	* 10		
CLARKE, P.	11		
McHUGH, G.	12		
SWALE, G.	13	Goal-2	
MULLANY, S.	14		
EASTWOOD, M.	* 15		

* Denotes Sub played and who replaced
C = Captain

IN TOUCH

THIS season's introduction of Cardiff City and Carlisle into the Rugby League brings the total of Senior Clubs to 33, the largest League membership for 79 years.

The cities of Cardiff and Carlisle have both had clubs in the Rugby League before. They were both due to enter the League in 1928/29 but Cardiff withdrew after being accepted.

Carlisle City entered but won only one of their ten matches before withdrawing. They played at Harraby Park Stadium which they shared with a Greyhound Company.

Cardiff completed one season — 30 years ago and finished one place above Liverpool City who were bottom. That same season Doncaster entered the League and finished 11th.

Keith Elwell of Widnes will today create a new world record of 191 successive club appearances if he plays at Odsal. He will break the record created by Gilbert Austin, a wingman for Hull K.R. from January 1919 to December 1923.

END OF THE FIRST HALF



After a try you'll be converted

Matthew Brown ✱

FIXTURES — SEASON 1981-82

SLALOM LAGER CHAMPIONSHIP — DIVISION TWO

1981		F	A
Fri. Aug. 14	*Hull K.R. away 3.00	7	34
(Webster's Yorks. Cup 1st Rd)			
Sun. 30	KEIGHLEY home 3.30		
Sun. Sep. 6	Rochdale H. away 3.00		
Sun. 20	OLDHAM home 3.30		
Sun. 27	Bramley away 3.00		
Wed. 30	SWINTON home 7.30		
Sun. Oct. 4	Blackpool B. away 3.00		
Wed. 7	Keighley away 7.30		
Sun. 11	ROCHDALE H. home 3.30		
Sun. 18	*John Player Trophy, 1st Rd.		
Sun. 25	Hunslet away 3.00		
Sun. Nov. 1	*John Player Trophy, 2nd Rd.		
Sun. 8	BLACKPOOL B. home 3.30		
Sun. 15	Carlisle away 3.00		
Sun. 22	CARDIFF CITY home 3.30		
Sun. 29	Doncaster away 2.30		
Sun. Dec. 13	BATLEY home 3.30		
Sun. 20	Cardiff City away 3.00		
Sun. 27	HUYTON home 3.30		
1982			
Fri. Jan. 1	Huyton away 2.30		
Sun. 3	HALIFAX home 3.30		
Sun. 10	Workington T. away 2.30		
Sun. 17	DONCASTER home 3.30		
Sun. 24	Oldham away 3.00		
Sun. Feb. 7	Dewsbury away 3.30		
Sun. 14	*State Express Chall. Cup. 1st Rd.		
Sun. 21	BRAMLEY home 3.30		
Sun. 28	*State Express Chall. Cup. 2nd Rd.		
Sun. Mar. 7	CARLISLE home 3.30		
Fri. 12	Salford away 7.30		
Wed. 17	Swinton away 7.30		
Sun. 21	DEWSBURY home 3.30		
Sun. 28	Batley away 3.00		
Sun. Apl. 4	HUNSLET home 3.30		
Sun. 11	Halifax away 3.00		

F A

Sun. 18	SALFORD home 3.30		
Sun. 25	WORKINGTON T. home 3.30		

YORKSHIRE SENIOR COMPETITION

1981	
Sat. Aug. 22	Bramley away 2.30
Fri. 28	Keighley away 7.30
Fri. Sep. 4	CASTLEFORD home 7.30
Fri. 11	HULL home 3.00
Sat. 19	Featherstone R. away 3.00
Fri. 25	*Leeds away 7.30
(Yorks. Sen. Cup. Comp. 1st Rd.)	
Sat. Oct. 3	HALIFAX home 3.00
Fri. 9	Hull K.R. away 2.30
Sat. 17	FEATHERSTONE R. home 3.00
Sat. 24	*Yorkshire Senior Cup, 2nd Rd.)
Fri. 30	LEEDS home 7.30
Sat. Nov. 7	York away 3.00
Sat. 14	BRADFORD N. home 3.00
Sat. 21	Wakefield T. away 2.30
Fri. 27	DONCASTER home 7.30
Sat. Dec. 5	BRAMLEY home 3.00
Sat. 12	Batley away 2.30
Fri. 18	WAKEFIELD T. home 7.30
1982	
Sat. Jan. 2	Halifax away 2.30
Sat. 9	HULL K.R. home 3.00
Sat. 16	Doncaster away 2.30
Sat. 30	YORK home 3.00
Sat. Feb. 6	DEWSBURY home 3.00
Fri. 12	Bradford N. away 7.30
Sat. 20	Dewsbury away 3.00
Sat. 27	Hunslet away 3.00
Fri. Mar. 5	Castleford away 7.30
Fri. 12	Leeds away 7.30
Fri. 19	Hull away 7.30
Fri. 26	BATLEY home 7.30
Sat. Apl. 3	HUNSLET home 3.00
Fri. 9	KEIGHLEY home 7.30

*Denotes all pay



FOR
READY MIXED CONCRETE
BUILDING MATERIALS
and
MOBILE CONCRETE PUMPING
around Huddersfield

Readymix-Huddersfield Ltd.

RED DOLES LANE, off LEEDS ROAD, HUDDERSFIELD

Telephone: Huddersfield 35311

Plants also at:— BRIGHOUSE

PENISTONE

Phone Brighouse 712651

Phone Barnsley 762476

COMMERCIAL CONTACT

IN the few weeks prior to this season starting new and imaginative plans were published for the upgrading of this fine stadium. Many grounds have still a long way to go to get into the 70's let alone the eighties, and with the advent last season of Fulham and now this season Cardiff and Carlisle, many more supporters are going to be a bit more selective when and where they watch their rugby. At Fartown a loyal hard core of support will suffer cold and discomfort just to watch the lads but many, many more will not. It is therefore the Club's job to attract these people. There are ways in which this will be done and the obvious first way is on the park. This season this task falls to Les Sheard and Eddie Barton and I for one feel sure that a new era of good football is on the way in Huddersfield. This leads me nicely to the second point which is that no club, however big or small, can operate without money in ever-increasing amounts due to devaluation and therefore your support for the various fund-raising schemes available is all the more valuable. We have launched three NEW ways of raising money in the last month in addition to the normal fund raisers.

1. "Fartown Real Estate". Rent your own piece of tryline at Fartown and be in on the action.

2. New Vice Presidents Club — membership now being booked and limited to 100.

3. "Fartown Super Six" — our newest lottery ticket launched this week — has six games and is still only 10p.

Then there is the Weekly Pool, the £1,000 draw, sponsorship — did you know you can sponsor Match Balls, Matches, Coaches to away games — you can advertise. Note there is no sponsor's name on our shirts yet.

Whether buying or selling, ALL contributions are appreciated.

If you are over 16 and under 100 you can become an agent for the club for any of these commercial activities or like a lot of our agents, for ALL our activities.

Over the next few programmes I will outline in detail our schemes but should participation be your immediate aim please contact me on 30710 or at Fartown, or in the office after today's match.

Roy Light



THIS PROGRAMME PRINTED BY

HORIZON REPROGRAPHY Commercial

38-40, SCAR LANE, MILNSBRIDGE, HUDDERSFIELD
TELEPHONE: 641127



PANDA PLANT

ROAD PLANING CONTRACTORS AND PLANNERS

TELEPHONE: ELLAND 74871

KING CLIFFE FISHERIES

Open for Lunch — Monday to Friday
11.30 am to 1.30 pm
Tea — Tuesday & Friday
Evenings — Monday, Wednesday & Friday
8.30 to 11.30 pm

INTERNATIONAL LAWS

FROM the start of this season, professional Rugby League games in Britain will be played under International Board Rules. These amendments are designed to standardise the rules of the 13-a-side code worldwide. Below is a summary of the changes to the British Laws of the Game.

THE SCRUM

1. The hooker will bind with his arms **OVER** the shoulders of his props.
2. The loose forward does **NOT** have to pack down at the scrum.
3. Forwards **CAN** push once the scrum has been correctly formed.
4. At **ALL** scrums, the attacking team shall have the loose head and the defending team the put in.
5. The ball shall be put in the scrum in a downward throw from waist height or below; or by rolling it along the ground. This shall be done without undue delay or dummy the scrum half immediately retiring behind his own pack.
6. The non-feeding scrum half does **NOT** have to keep his hand on the rearmost forward.

BALL STEALING

Until a tackle has been completed, the ball can be stolen from the player in possession.

YELLOW CARD

The yellow card, as a signal for an official caution, is scrapped. A booking will be recorded by the referee in the presence of the player's captain.

DIFFERENTIAL PENALTY

The differential penalty has been extended to offer the choice of a tap penalty or a kick for touch with the resultant second phase tap. A kick for goal is **NOT** permitted.

CONTACT WITH REFEREE

If the ball makes contact with the referee during play, a scrum shall be formed **ONLY** if the referee decides that play is irregularly affected.

NEW INTERNATIONAL LAWS OF THE GAME

"3 POINT" DROP GOAL

When a player is fouled in the act of scoring a drop goal, he will be awarded the scoring value of one point and his team will be awarded a penalty underneath the posts with the opportunity of adding a further two points.

DIFFERENTIAL PENALTY SIGNAL

When a Differential Penalty is awarded, the referee will adopt the signal for a traditional penalty but will raise and lower his arm twice to indicate that it is a differential award.

SUBSTITUTES

The use of two substitutes shall be permitted provided their names are made known to the Referee prior to the kick-off.

A side may make a maximum of four substitutions.

(Each substitution may involve any two players and may be made at any time and for any reason with the exception that a substitute may not be brought on simply to take a kick at goal).

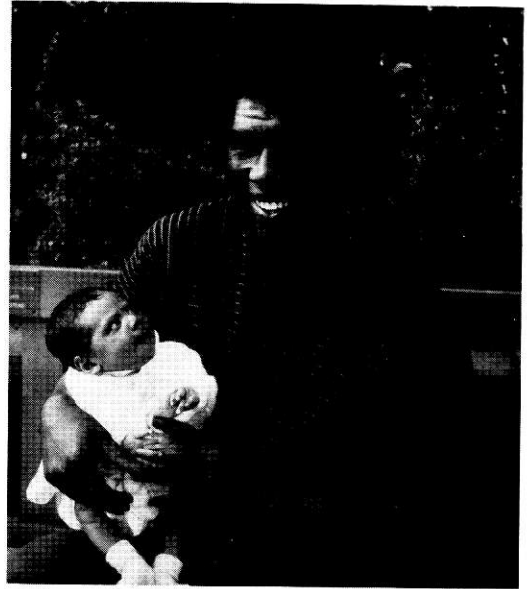
POPULAR players Ian Slater and Tony Johnson have become fathers in the close season.

Ian's wife, Christine, gave birth to a boy, Ryan Lee, weighing 7 lb 1 oz. at Marygates Maternity Hospital, Wakefield, on June 30th.



Proud mother **Christine Slater** with Ryan Lee.

Tony's wife, Susan, also gave birth to a boy, Mark Barrington, weighing 7 lb at the Princess Royal Maternity Hospital, Huddersfield, on May 16th.



Proud father **Tony Johnson**, with son Mark Barrington.

CLUB SHOP

STOCKS A VAST SELECTION OF



CLUB SWEATERS
SCARVES
BOB HATS
STICKERS AND BADGES



VISIT IT AND SEE!



WHAT a beautiful way to start the 1981-82 Slalom Lager Championship with new Rugby League Personality Girl TRACEY FREEMAN (left) and the current Miss Slalom Lager, GERALDINE FULLER.

Both girls will be on duty throughout the new season, attending matches and promotional functions, TRACEY being the daughter of Halifax try-scoring record holder Johnny Freeman.

This is the second season of the Slalom Lager sponsorship which this campaign is valued at £70,000. Prize money will once again be allocated to the Winners of the Slalom Lager Championship, the Second Division and the Slalom Lager Premiership.

FOR GOOD JEWELLERY AND GOOD ADVICE



FILLANS

THE SPECIALISTS
IN DIAMONDS
WATCHES AND
SILVERWARE

19 MARKET PLACE & 2 MARKET WALK, HUDDERSFIELD

T.D. & J. Kirrane L

BUILDING CONTRACTOR

Phone High Flatts (88) 468

Dearne View
Addingley La
Cumberworth

Furniture Mart

MOLDGREEN
HUDDERSFIELD

Telephone: Huddersfield 40178



WANTED

ALL TYPES OF GOODS AND HOUSEHOLD
GAS COOKERS — FRIDGES —

also we have a large quantity of
Good Clean Furniture and Carpets on sale at a

OPEN 9.30 a.m. to 6.30 p.m. DAILY

BT

PRINTING

STEVE MULLANY — TESTIMONIAL NEWS

STEVE'S Testimonial Year runs until December, with many activities planned.

There are to be more race nights following the success of the first, games evenings at local pubs, a darts match, sports quiz and fancy dress pub crawl.

If you cannot attend any of these functions, pledge your support by buying a testimonial brochure and pen, available from the Club Shop.

Cobwood Trophies

Proprietor: R.E. Howatson
Morley Lane
Milnsbridge, Huddersfield
Tel: (0484) 658636



VISIT OUR FACTORY

TROPHIES MANUFACTURED
REPAIRED & RENOVATED
ENGRAVING CUPS & TANKARDS

SPECIAL CLUB DISCOUNTS
GOOD DISCOUNTS

RUGBY LEAGUE PUBLICATIONS

THREE popular Rugby League publications will be available from the start of September.

RUGBY LEAGUE GUIDE:

The traditional Rugby League handbook once again contains full details of the clubs, the fixtures, the bye-laws, the referees, and Rugby League's associations. Regarded as the 'bible' of the Rugby League game, this invaluable publication is priced £1.50 + 50p. p & p.

RUGBY LEAGUE DIARY:

Now in its third season, the John Player Rugby League Diary contains the traditional diary format from September 1981 to December 1982 and is highlighted by 30 pages of Rugby League material. This special section includes club by club fixtures, photographs,

and features on awards, competition wins, the clubs, referees, and attendances. The pocket-size diary is priced £1.50 + 20p. p & p.

GUIDE TO GROUNDS:

The 1981-82 edition of the ultra-popular Slalom Lager Rugby League Routeway is now available. This new edition of the Guide to Grounds includes A.A. directions to all 33 professional grounds, including newcomers Cardiff City and Carlisle plus, for the first time, directions to Rugby League Headquarters in Leeds. This 40-page Slalom Lager publication is priced 40p + 20p. p & p.

All the above publications are available from:

The Public Relations Department
The Rugby Football League,
180, Chapeltown Road,
LEEDS LS7 4HT.

J S BAMFORTH & CO

SCRAP METAL MERCHANTS

Cash buyers of all
scrap metals

13/14, VIADUCTS MILNSBRIDGE
HUDDERSFIELD 652777

BEN SHAW'S

Drink a

SO

BENJAMIN SHAW & SONS

WILLOW LANE, HUDDERSFIELD HD1 5ED.
Telephone: Huddersfield 27427-8-9

SUPPORTERS' CLUB NOTES

ANOTHER season starts with renewed hope for supporters to see some exciting Rugby League and good fortune favour our Fartown teams. Good luck to Les Sheard in his first season as a club coach.

Welcome to the Keighley supporters who have travelled to see their team endeavour to return to winning ways after losing to Batley in the Yorkshire Cup 2nd Round. A good win against Bramley in the first round must have been very encouraging.

The Supporters Club A.G.M. will take place in the Social Club on Wednesday, September 23rd at 8.00 p.m. We have some vacancies on the committee, so if anyone fancies joining us they will be made very welcome. A second programme fair will be held in the Social Club on Sunday, September 13th from 10.00 a.m. to 3.00 p.m., admission 20p. On the next day, Monday September 14th, from 8.00 p.m. a concert will be held in aid of the Steve

Mullany benefit fund. Entertainment will be provided by a local 'Oompah' Band. Admission will be 50p.

HUDDERSFIELD R.L. CLUB PLAYERS' ASSOCIATION NOTES

THE annual bowling handicap was held on Sunday, August 2nd on the bottom green here at Fartown. A record number of members entered for the competition which was played in glorious weather. The winner this year was Bob Robson who defeated the Chairman of the Association, Peter Gronow, in an exciting Final.

The Players' Association notes will once again be a regular feature of Fartown home programmes. If anyone would like to contribute with enquiries to a 'Where Are They Now' section, please write down the name of a former Fartowner and post it into the Pavilion or Supporters Club, together with your name and address and then watch future home programmes for the result. I hope no-one will be able to stump our committee. Time will tell.

TRY G. & K. MOTORS

FRONT STREET, GLASSHOUGHTON, CASTLEFORD
FOR YOUR NEXT USED CAR

Armitage & Sons

(Seeds) Ltd.

1, LORD STREET,
HUDDERSFIELD.
Tel: 20187



Garden Machin

19, OL
HUDD
Tel: 36

SUPPLIERS OF AND AGENTS FOR:

TURF DRESSING
FERTILIZERS
MARL LOAM
TOP SOIL
WEED KILLERS
FUNGICIDES
SPECIAL GRASS SEED
MIXTURES TO YOUR SPEC.

24" Zephyr



Huddersfield

v.

Keighley

Colours: Claret & Gold Shirts, White Shorts

Colours: White with Red/Green 'V'

Eddie BARTON	1 Full Back	David JICKELLS
Peter CRAMP	2 Right Wing	Nicky WHITCOMBE
Trevor LEATHLEY	3 Right Centre	Paul MACHEN
Les SHEARD	4 Left Centre	Billy ROWETT
Wilf GEORGE	5 Left Wing	Graham BEALE
Ian SLATER	6 Stand Off	Norman BRELSFORD
Mick SHEPHERD	7 Scrum Half	Colin NORTH
Alan WALKER	8 Openside Prop	Les SELLERS
Derek WROE	9 Hooker	Dean RAISTRICK
David CHESTER	10 Blindside Prop	Alan CLARKSON
Gordon McHUGH	11 2nd Row Fwd.	Derek ARNOLD
Philip CLARKE	12 2nd Row Fwd.	Steve DICKENS
Graham SWALE	13 Loose Forward	Steve GARNER
	14 Substitute	Calvin WILKES
	15 Substitute	Mick HAWKSWORTH

MATCH OFFICIALS

Referee: Mr. R. MOORE (Wakefield)

Touch Judges:

Mr. E.B. KENT (Claret Flag)

Mr. G.J. HALL (Gold Flag)

YOUR NEXT HOME GAME

Friday, September 4th 7.30 CASTLEFORD 'A'

Friday, September 11th 7.30 HULL 'A'

SUNDAY SEPTEMBER 20th 3.30

OLDHAM

Today's Match Ball Sponsor is

G.R. PICKARD & SON LTD.

WINE AND SPIRIT MERCHANTS & BOTTLERS

We thank Mr. Robert Pickard for his generous support

Paul [AKA Sheepridge Giant] sent this in formation:

This might be of interest to some :-

A fixture notable for the debut of Wilf George, father of current 'Giant' Luke. WG was another Huddersfield product who 'got away' during our bad years, he went to Halifax and bagged a challenge cup winners medal.

Player coach Sheard, saying do away with 'plodding ritualistic' set plays & patterns, and go for more off the cuff stuff. Didn't quite work out for him. That season Fartown finished 11th of 17, won 13 and drew 1 of 32 fixtures, and only scored 370 points in total at an average of just over 11 per game.

Result of this game was :-

Fartown 12 v 10 Keighley - Crowd : 1152

(Fartown went 12 nil up)

Barton

Cramp Leathley Sheard George (Mullaney (T))

Slater (Chester) Sheperd

Swales (2G)

Clarke (T) McHugh

Walker Wroe Rose

Also the year of yet another attempt to establish RL in Wales. Cardiff Blue Dragons franchise entered div 2, then in 1984 moved out to Bridgend and packed up altogether a year later after 5 seasons in total. Carlisle also a new franchise club in this year, they lasted a total of 17 seasons before merging with Barrow.